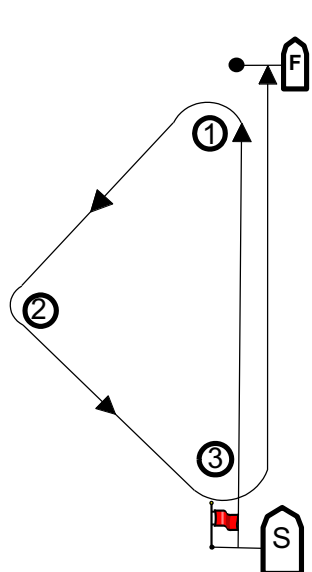


Course Diagrams Attachment A

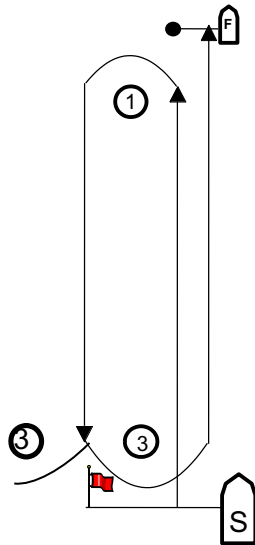
Actual angle between legs will vary depending on available racing area
 Course designators show number of legs to be sailed
 Gate marks are not a mark of the course on the leg before finishing downwind

"Triangle – Upwind Finish = U"



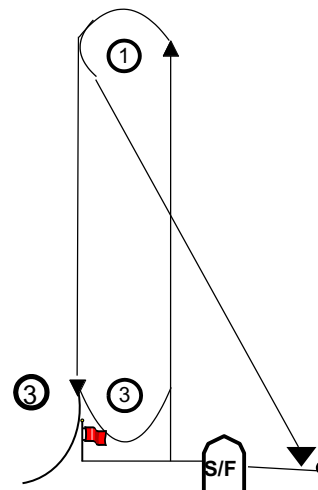
TU-4 S-1-2-3-F
 TU-7 S-1-2-3-1-2-3-F
 TU-10 S-1-2-3-1-2-3-1-2-3-F

"Windward Leeward – Upwind Finish = U"



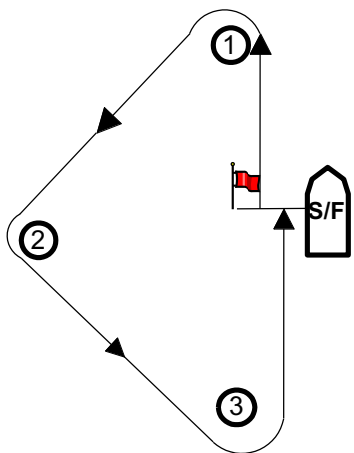
WLU-3 S-1-3-F
 WLU-5 S-1-3-1-3-F
 WLU-7 S-1-3-1-3-1-3-F

"Windward Leeward – Downwind Finish = D"



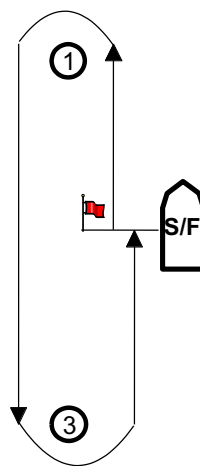
WLD-4 S-1-3-1-F
 WLD-6 S-1-3-1-3-1-F
 WLD-8 S-1-3-1-3-1-3-1-F

"Modified Triangle – Mid Start & Finish"



MT-4 S-1-2-3-F
 MT-7 S-1-2-3-1-2-3-F

"Modified Windward Leeward – Mid Start & Finish"



MWL-3 S-1-3-F
 MWL-5 S-1-3-1-3-F